

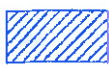


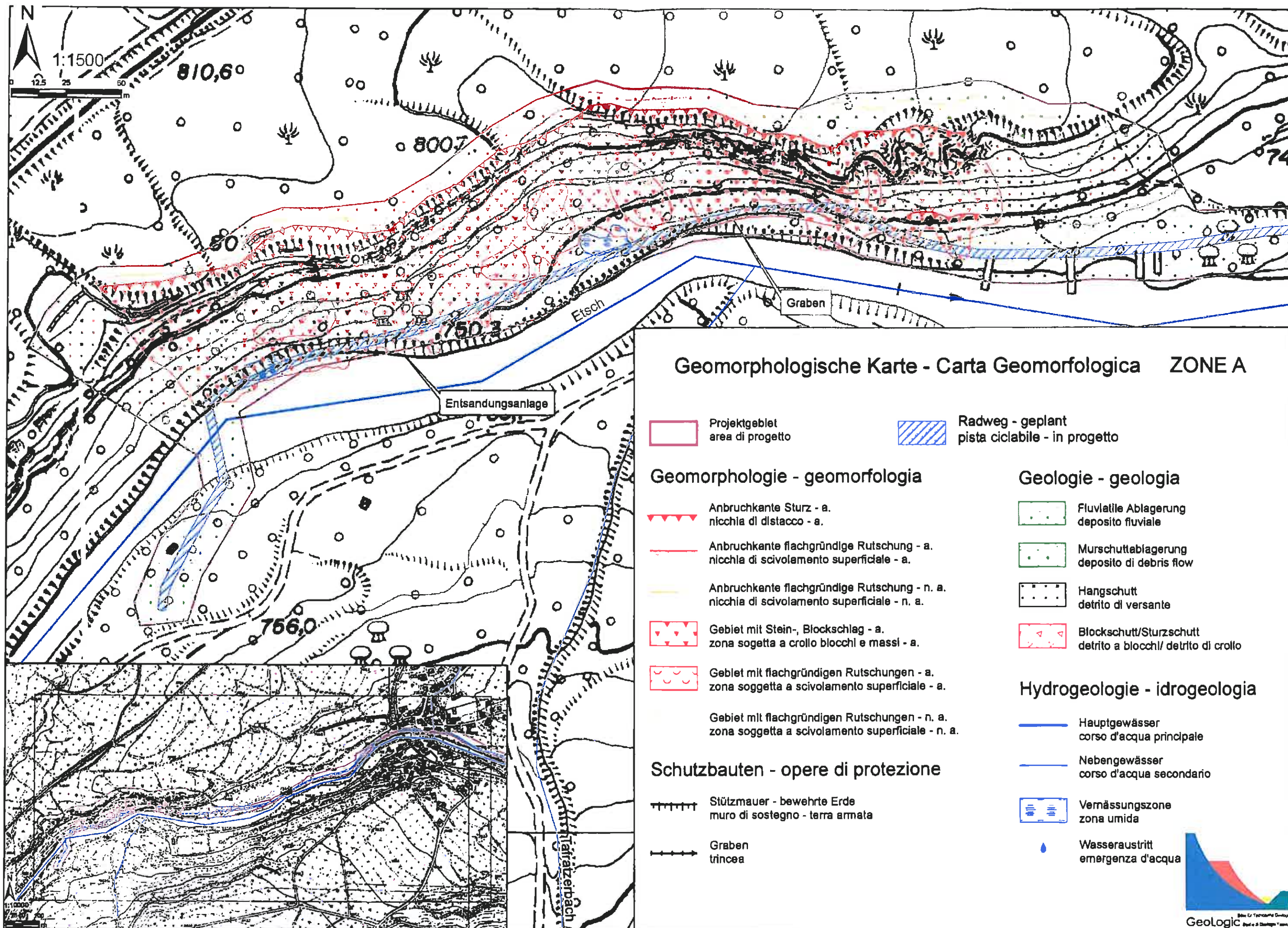
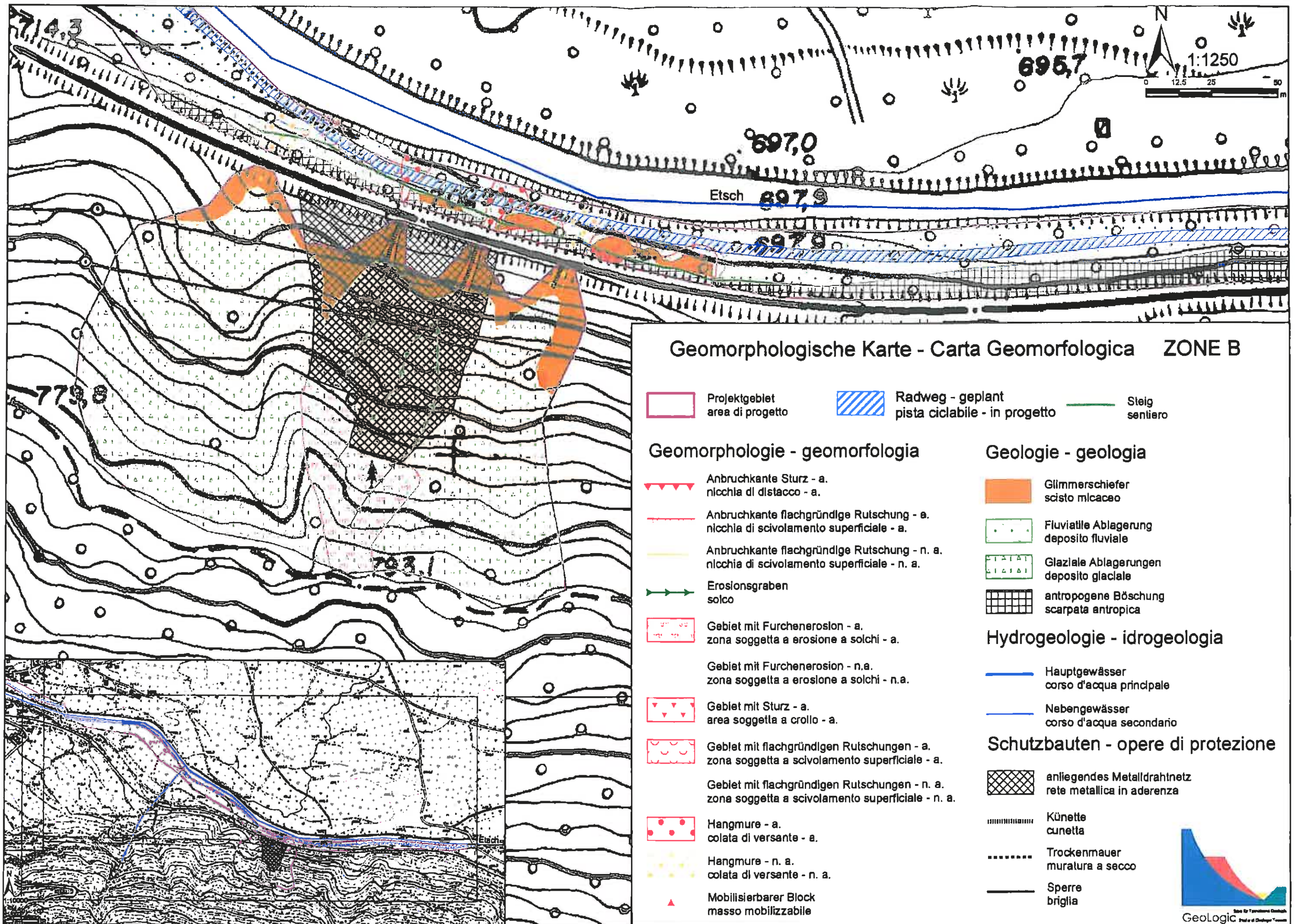


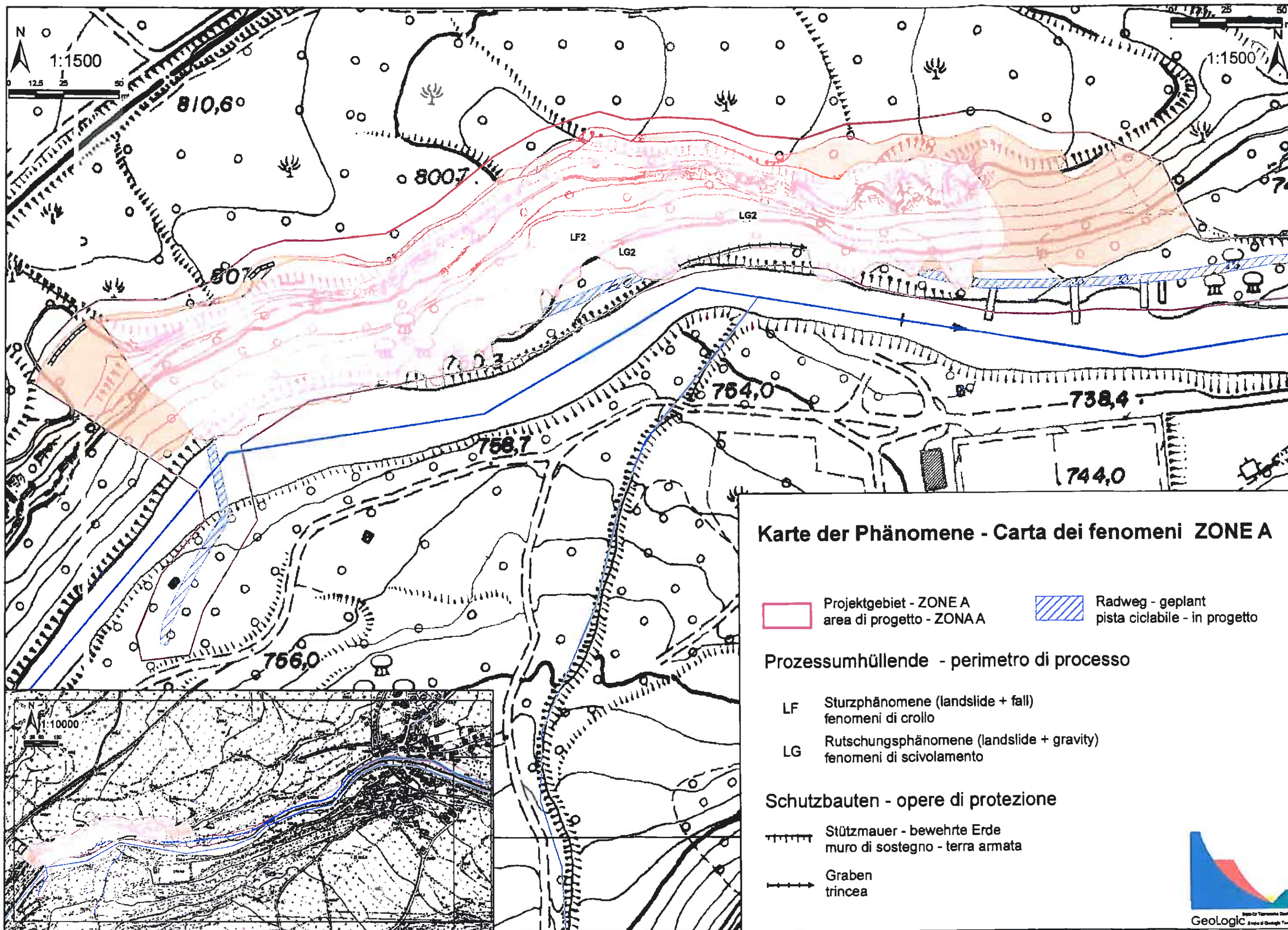
Übersichtskarte - Corografia

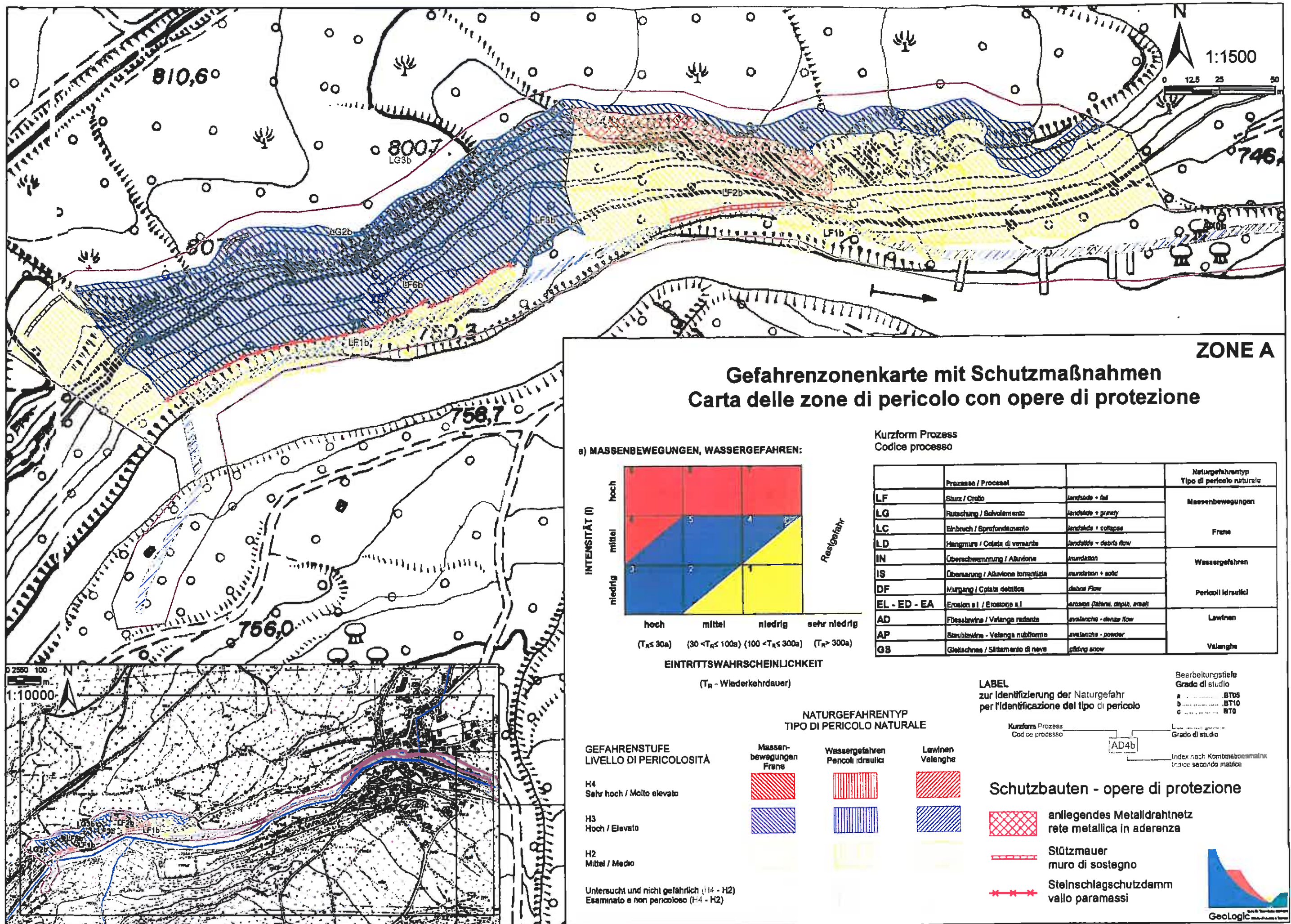
Legende - legenda

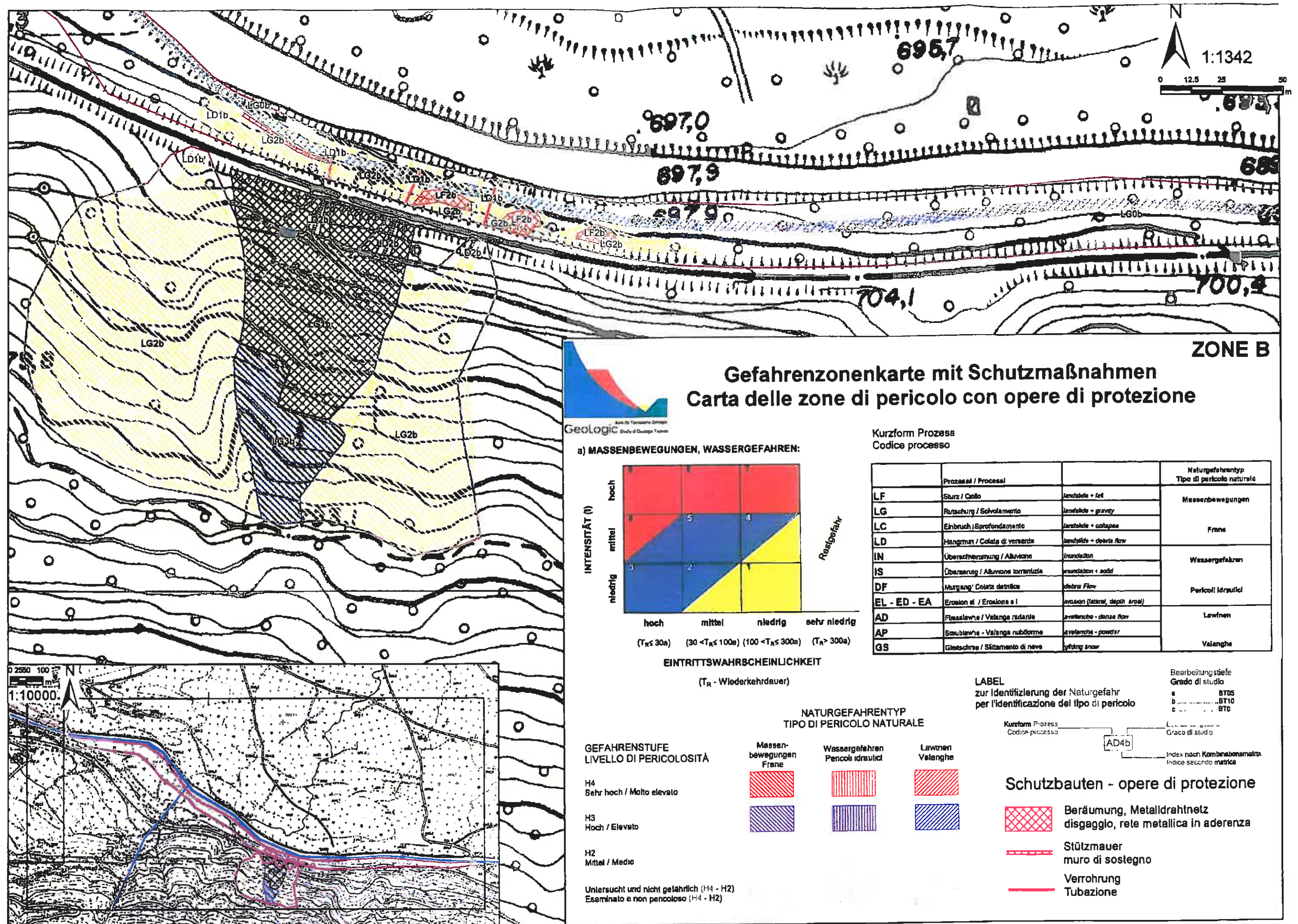
-  Projektgebiet
area di progetto
-  Zone A
Zone B
-  Radweg - geplant
pista ciclabile - in progetto
-  Hauptgewässer
corso d'acqua principale
-  Nebengewässer
corso d'acqua secondario

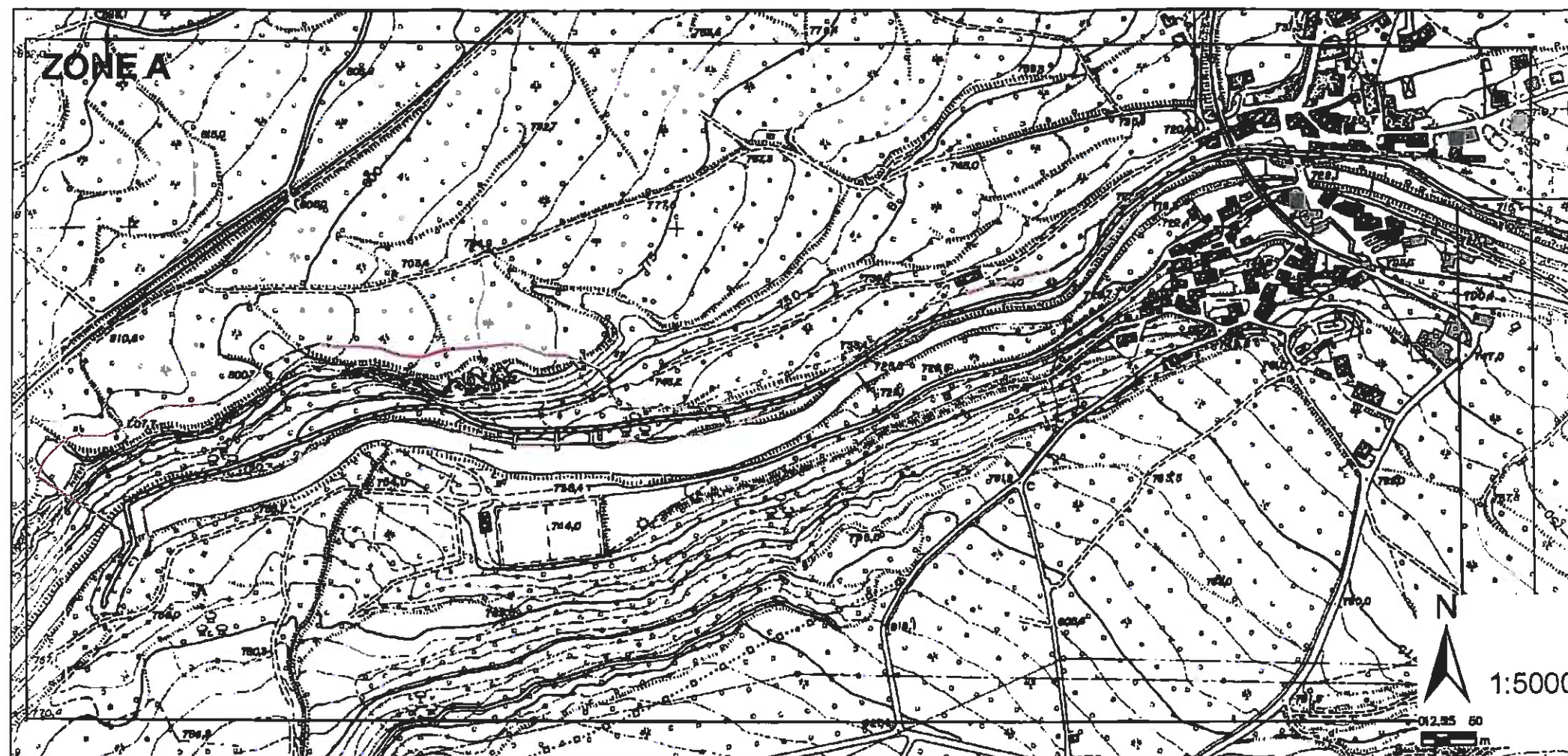










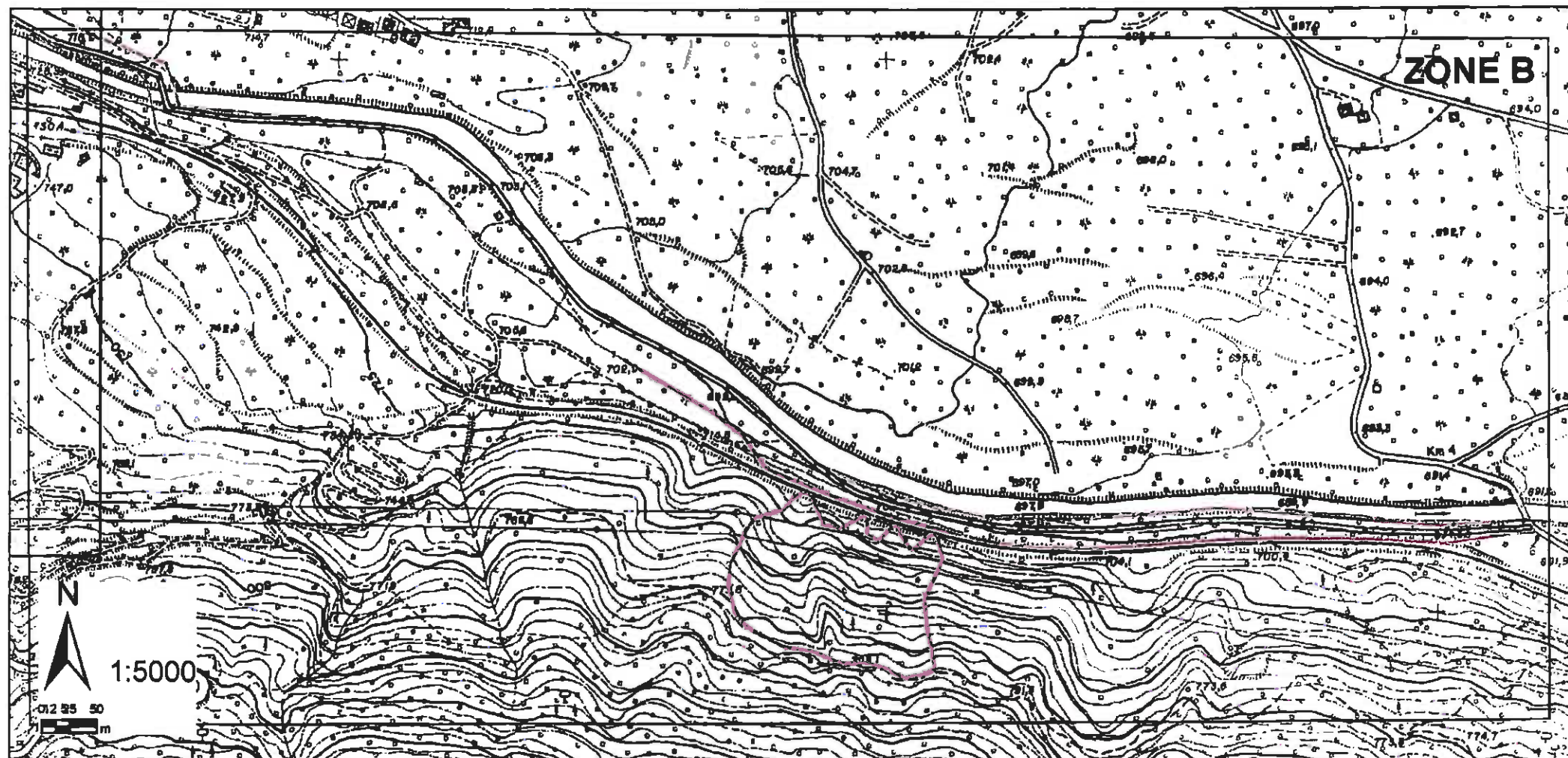


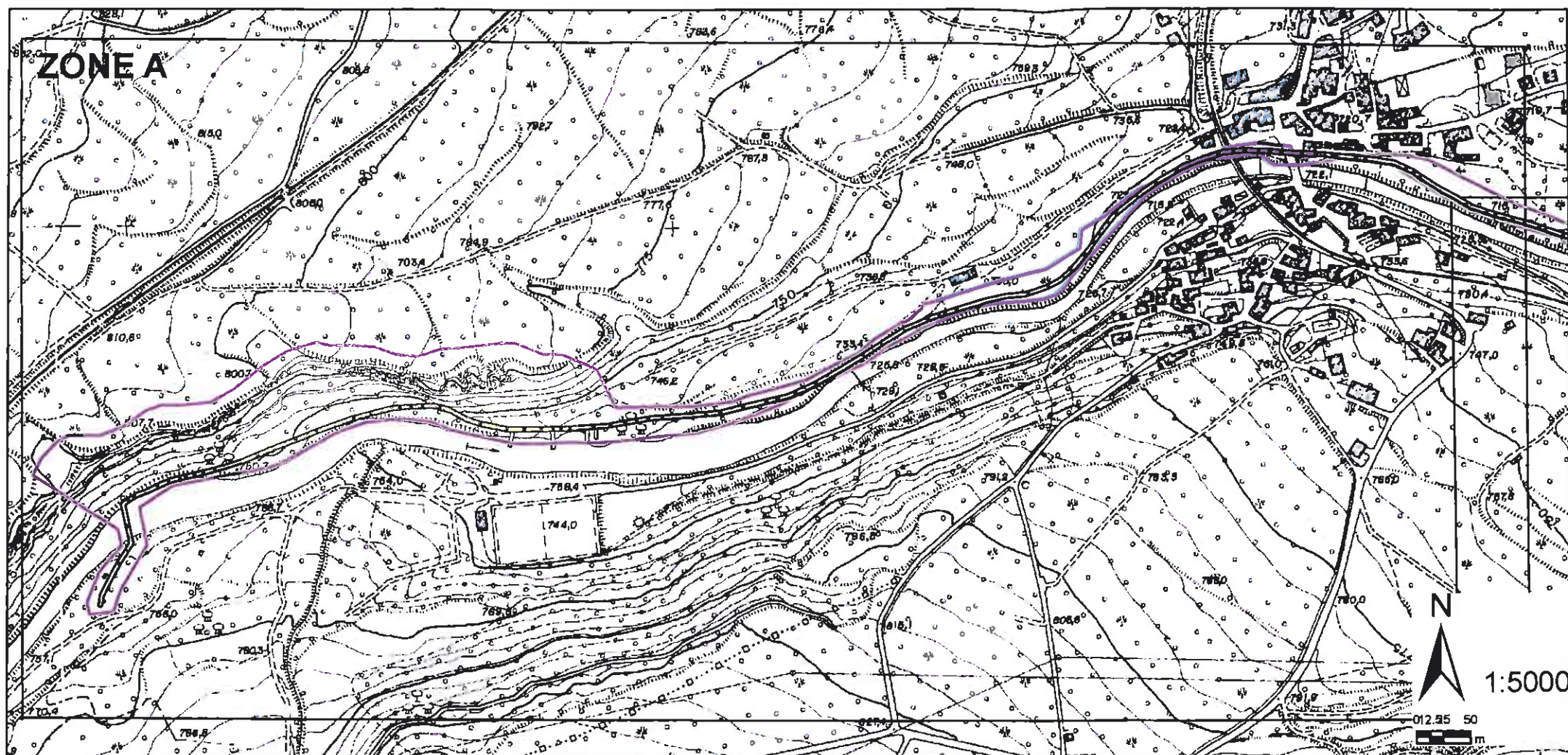
**Karte der Schadensanfälligkeit
- aktuelle Bodennutzung**

**Carta della vulnerabilità
- uso del suolo attuale**

**Klassen der Schadensanfälligkeit
classi di vulnerabilità**

-  V1 gering - bassa
-  V2 mittel - media
-  V3 hoch - media
-  V4 sehr hoch - molto elevata







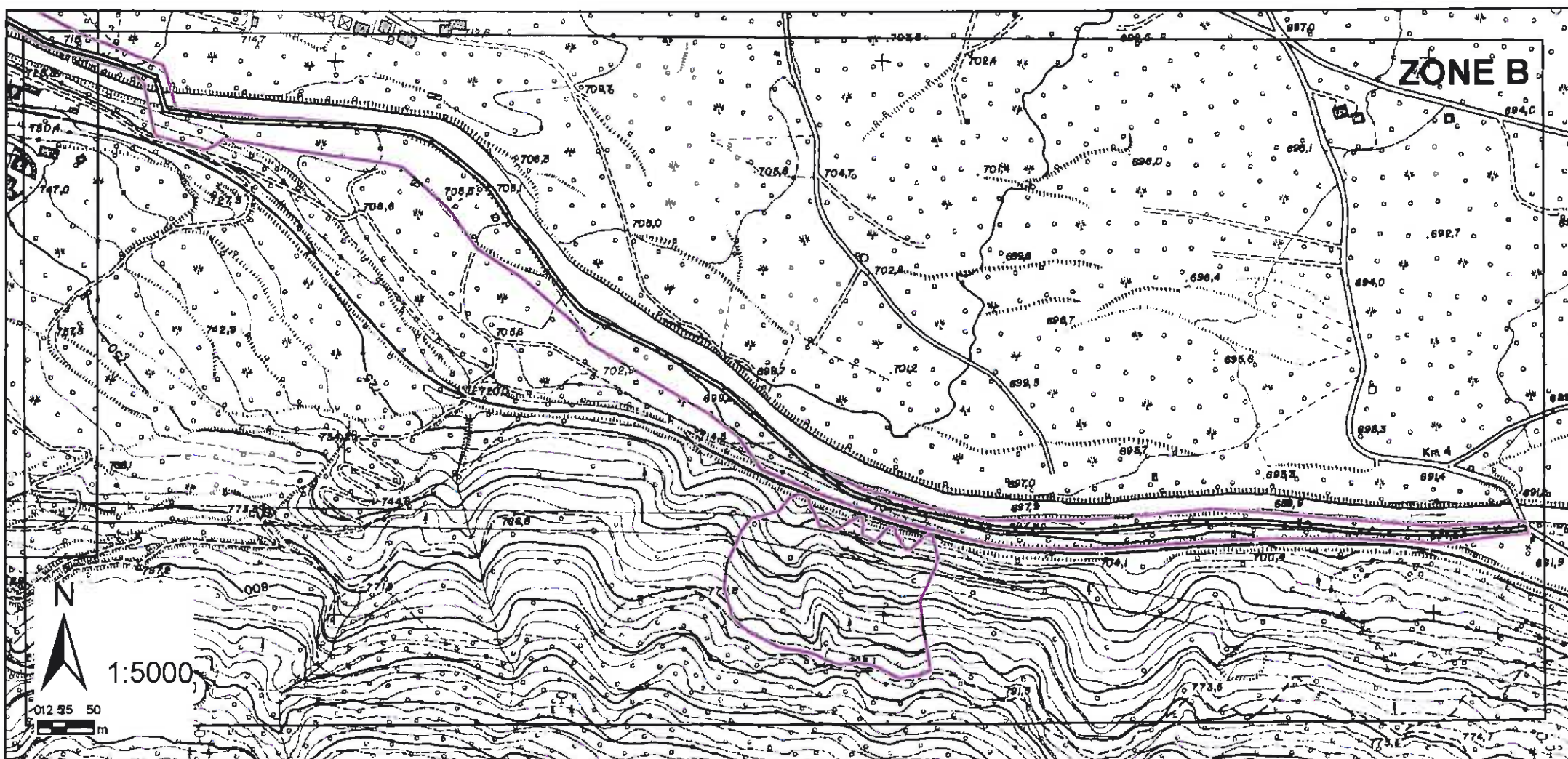


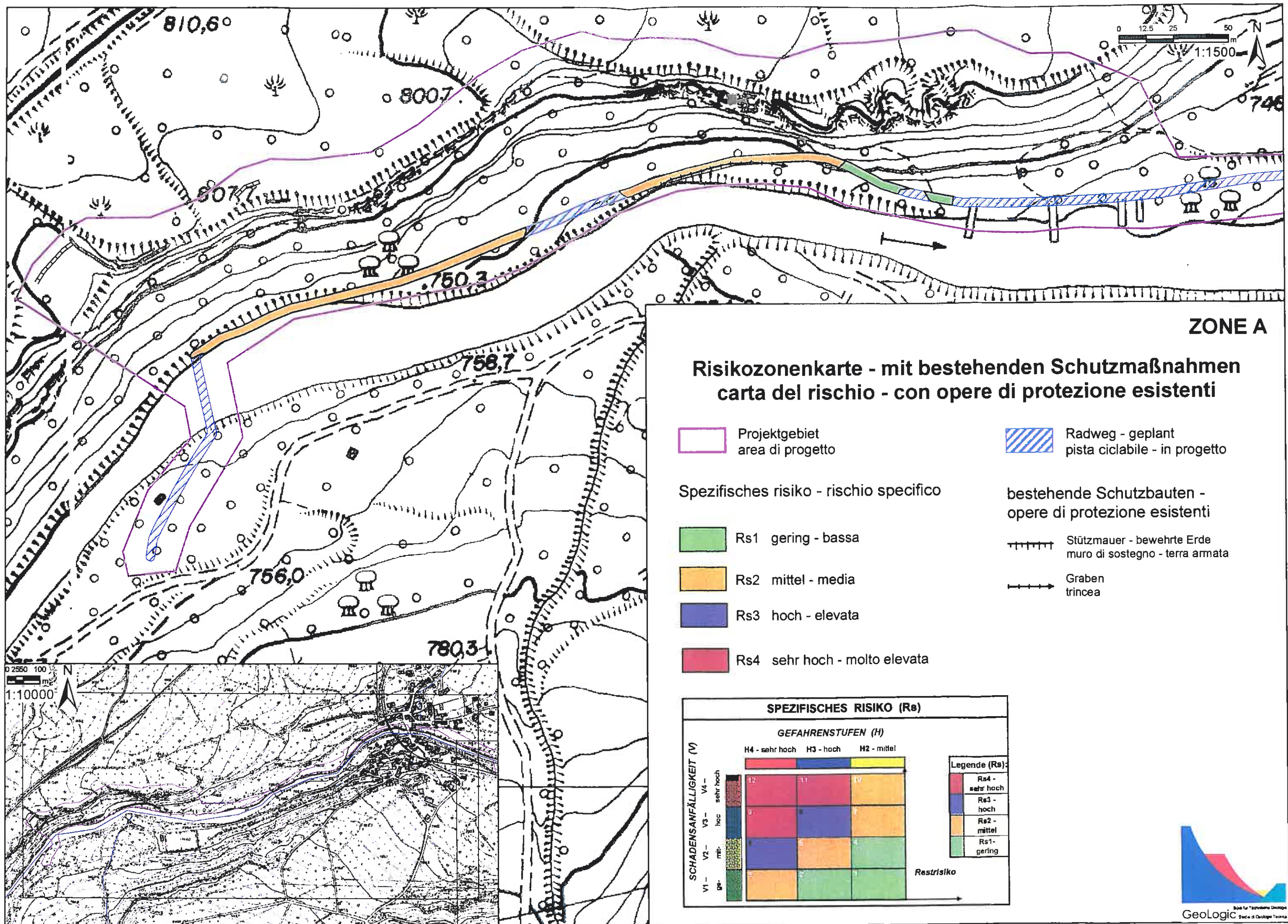
Karte der Schadensanfälligkeit - geplante Bodennutzung

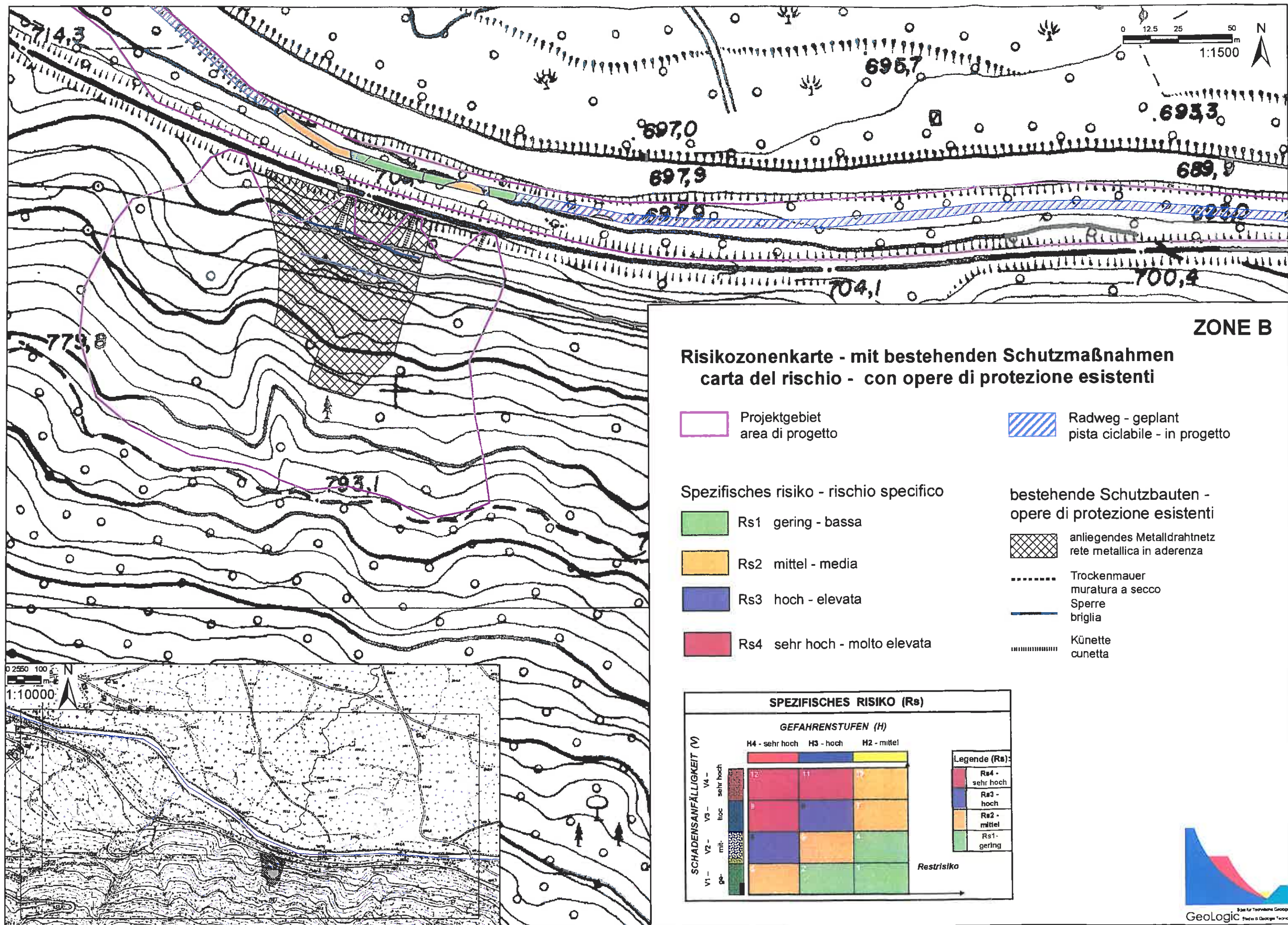
Carta della vulnerabilità - uso del suolo in progetto

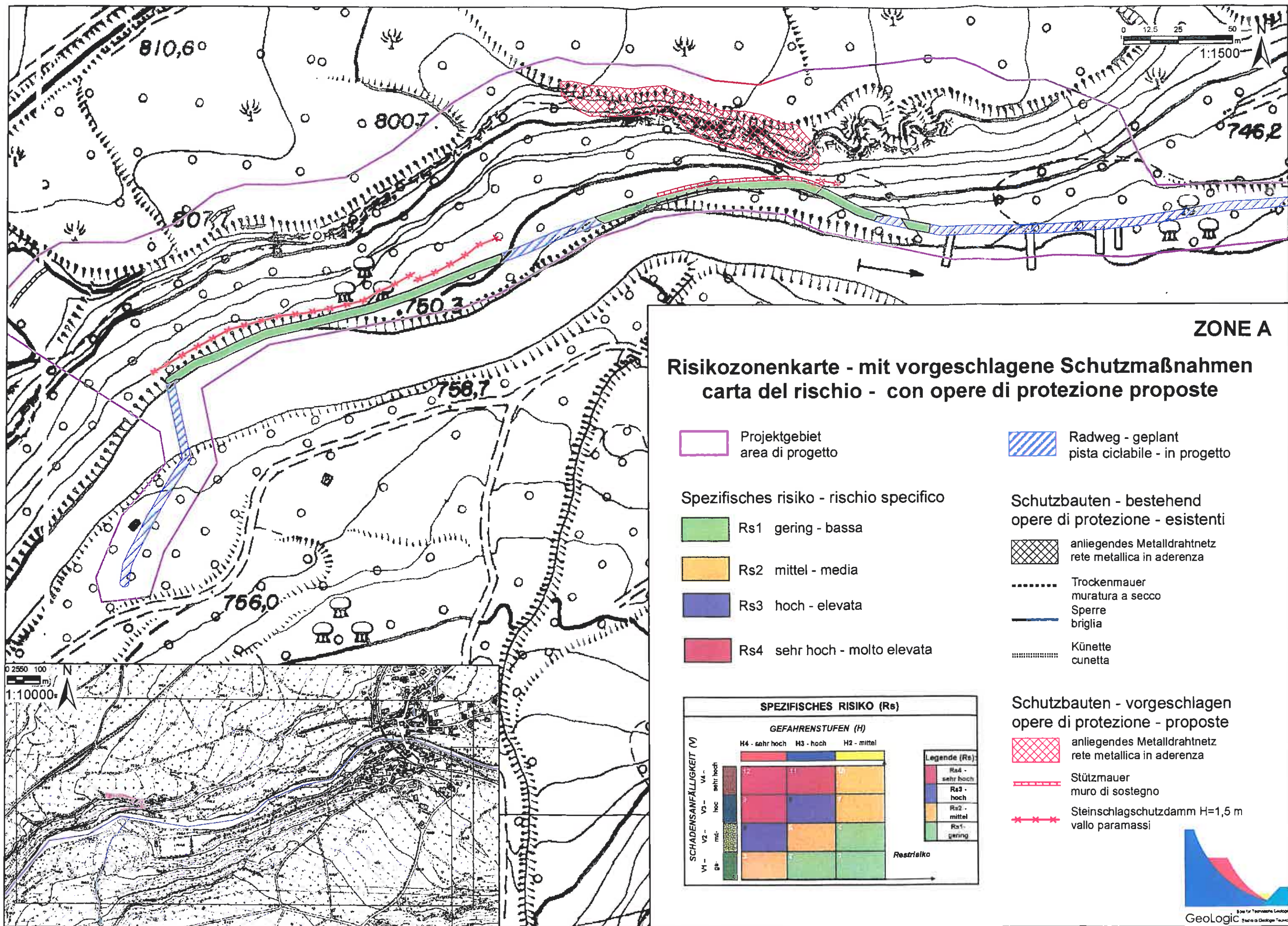
Klassen der Schadensanfälligkeit classi di vulnerabilità

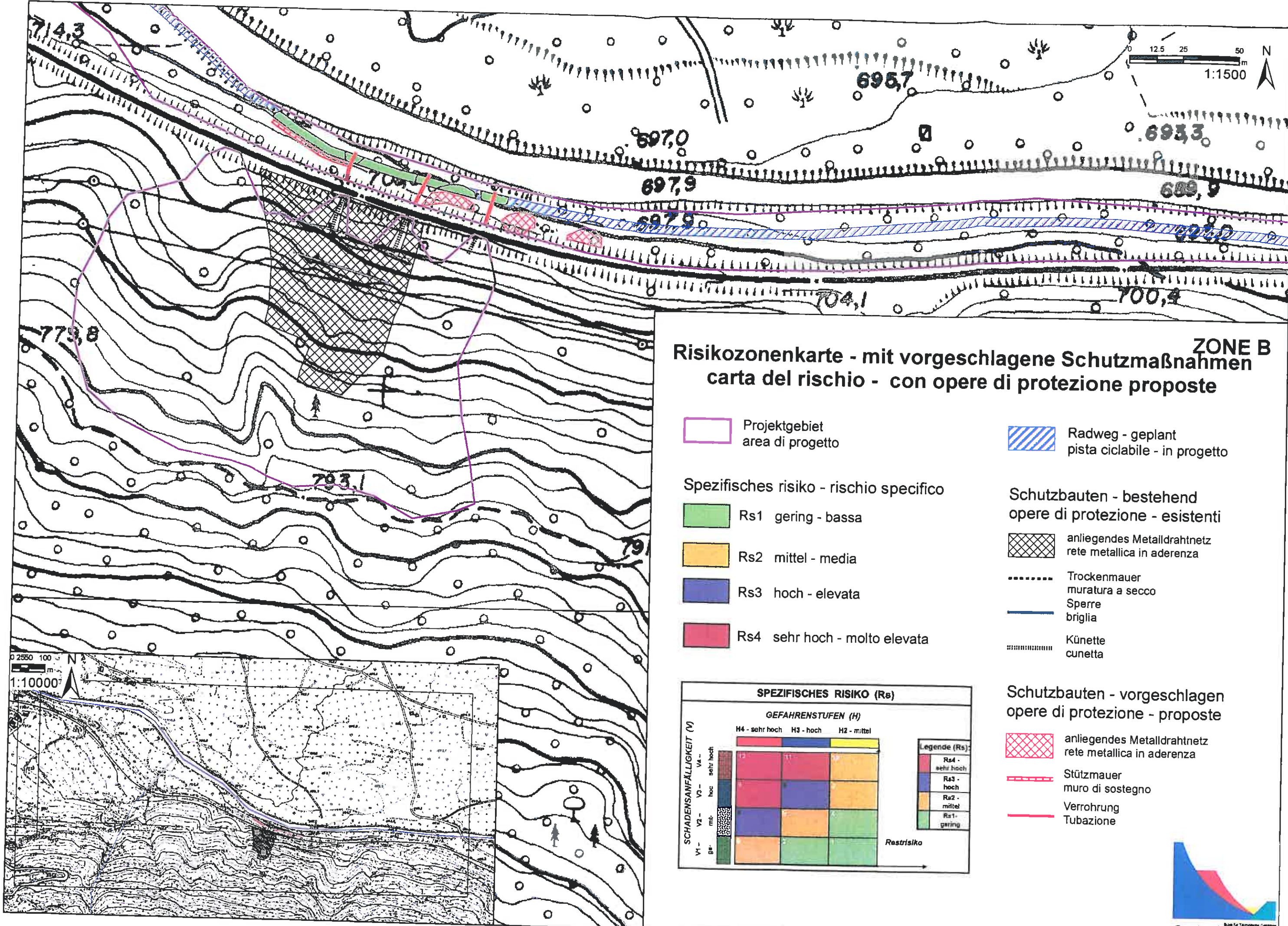
-  V1 gering - bassa
-  V2 mittel - media
-  V3 hoch - media
-  V4 sehr hoch - molto elevata







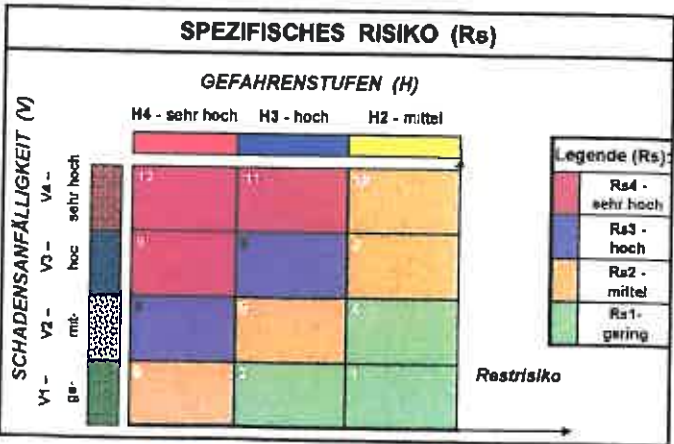


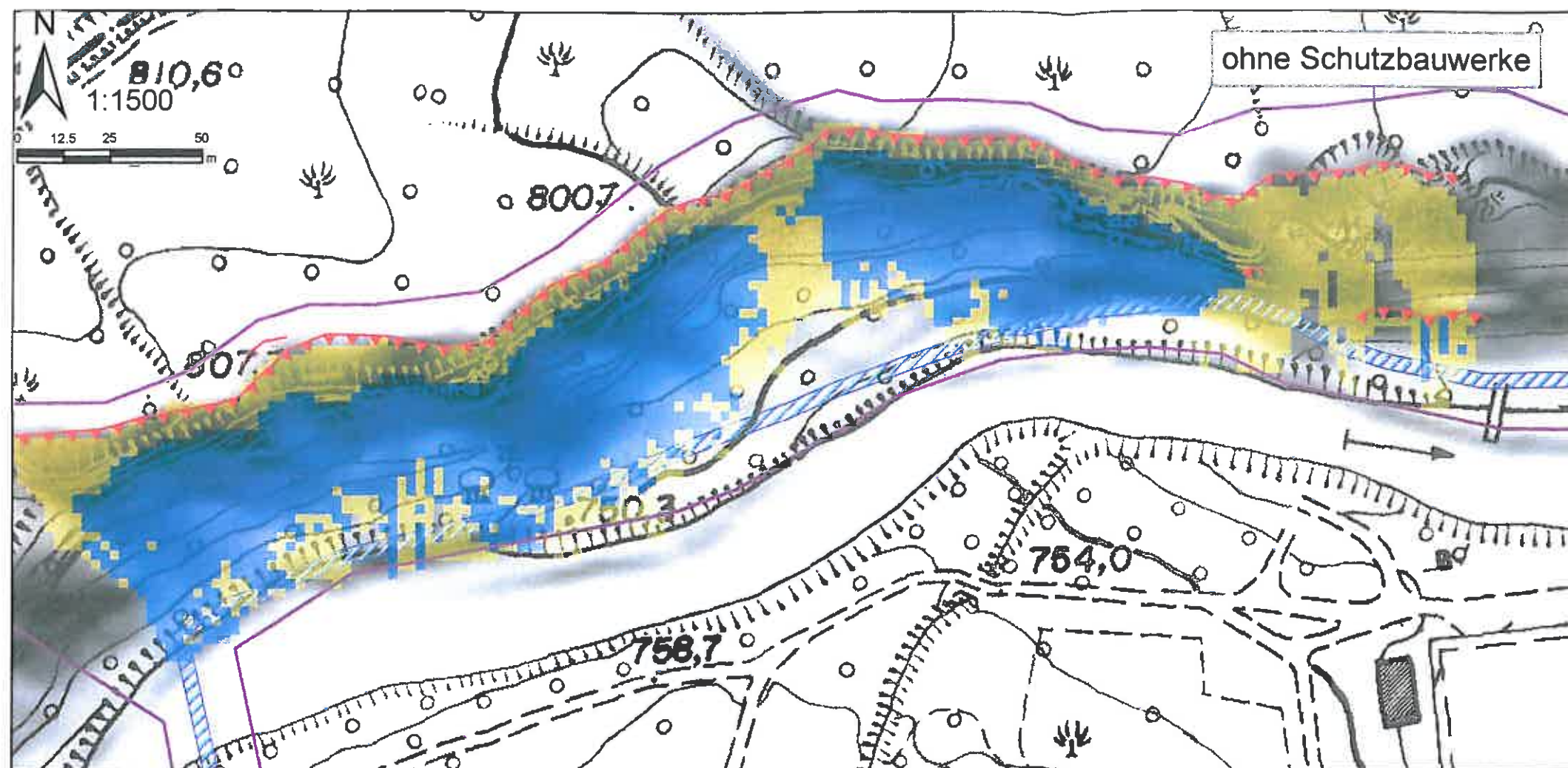


Risikozonenkarte - mit vorgeschlagene Schutzmaßnahmen
carta del rischio - con opere di protezione proposte

ZONE B


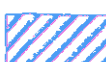

- Projektgebiet
area di progetto
- Radweg - geplant
pista ciclabile - in progetto
- Spezifisches risiko - rischio specifico**
 - Rs1 gering - bassa
 - Rs2 mittel - media
 - Rs3 hoch - elevata
 - Rs4 sehr hoch - molto elevata
- Schutzbauten - bestehend
opere di protezione - esistenti**
 - anliegendes Metalldrahtnetz
rete metallica in aderenza
 - Trockenmauer
muratura a secco
 - Sperre
briglia
 - Künette
cunetta








ZONE A

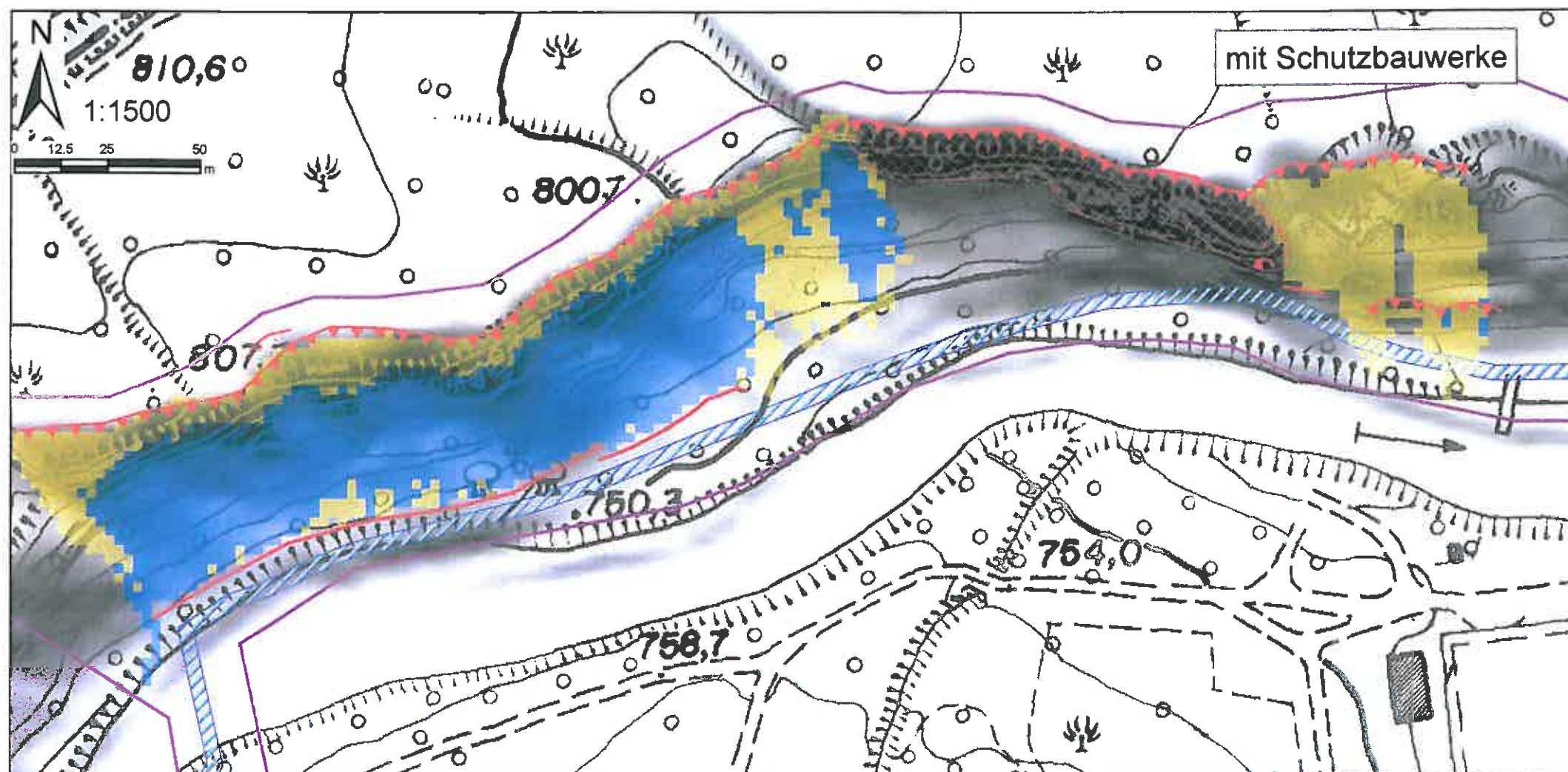
Sturzsimulation - Aufprallenergien simulazione crollo - energie d'impatto

-  Projektgebiet
area di progetto
-  Radweg - geplant
pista ciclabile - in progetto
-  Anbruchkante Sturz - a.
nicchia di distacco - a.

max. Aufprallenergie

kJoule

-  0
-  0 - 30
-  30 - 130

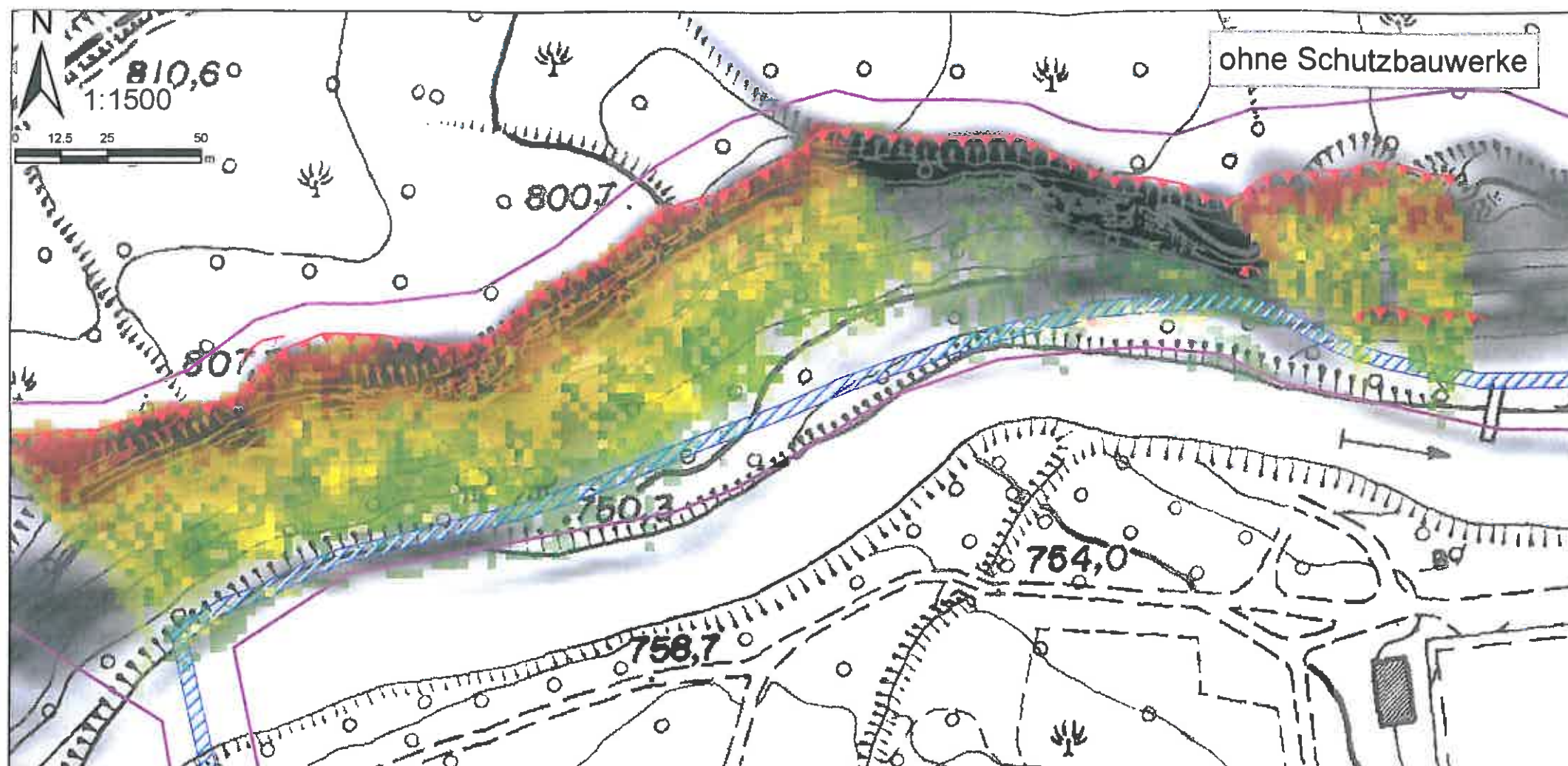





Schutzbauten, vorgeschlagen

-  Metalldrahtnetz
-  Erddamm H=1,0-1,5 m

ZONE A

Sturzsimulation - Reichweite simulazione crollo - traiettorie

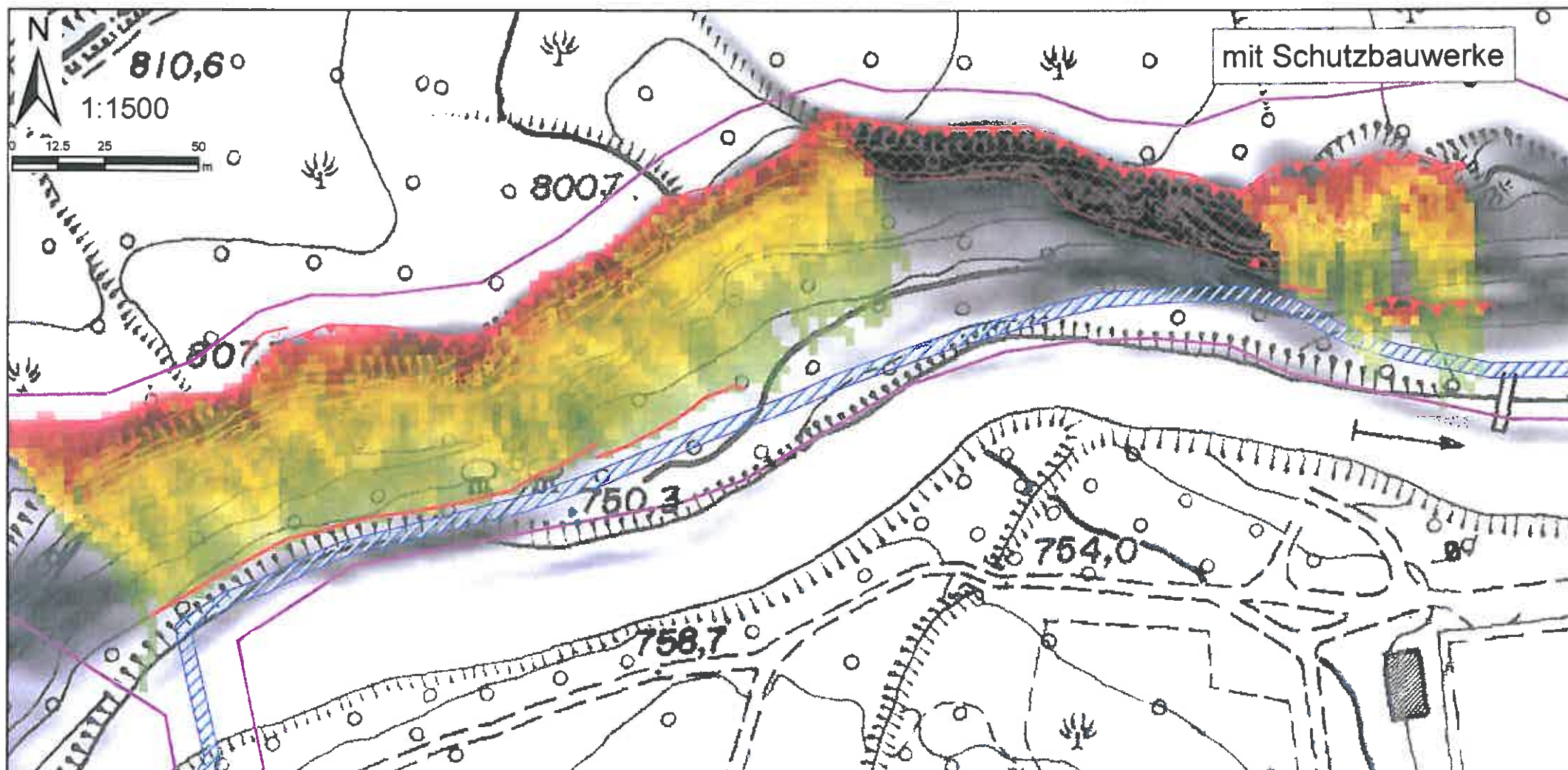


-  Projektgebiet
area di progetto
-  Radweg - geplant
pista ciclabile - in progetto
-  Anbruchkante Sturz - a.
nicchia di distacco - a.

max. Reichweite

Stillstand/Zelle

- High : 80
- Low : 0

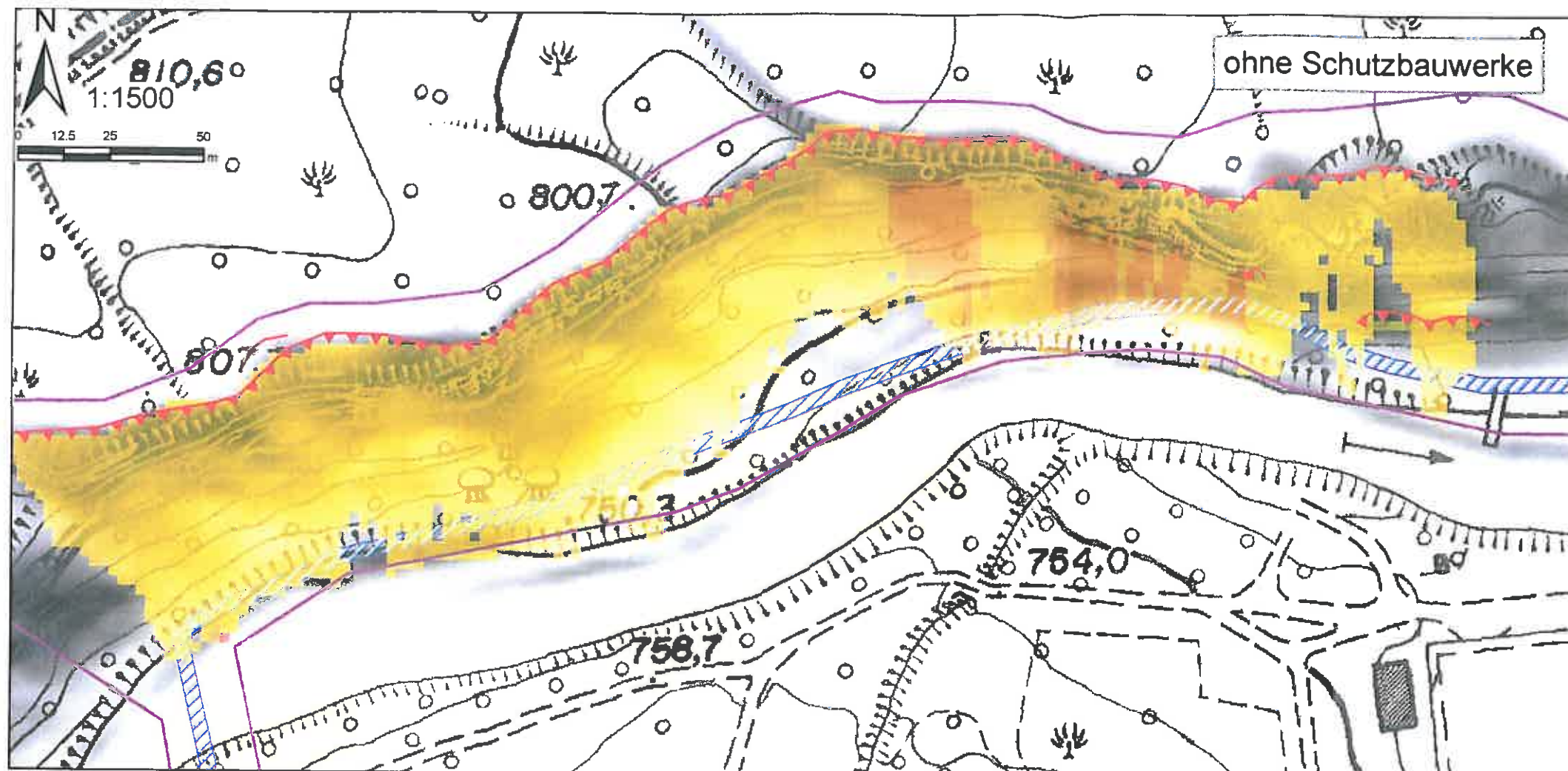





Schutzbauten, vorgeschlagen

-  Metalldrahtnetz
-  Erddamm H=1,5 m



ZONE A

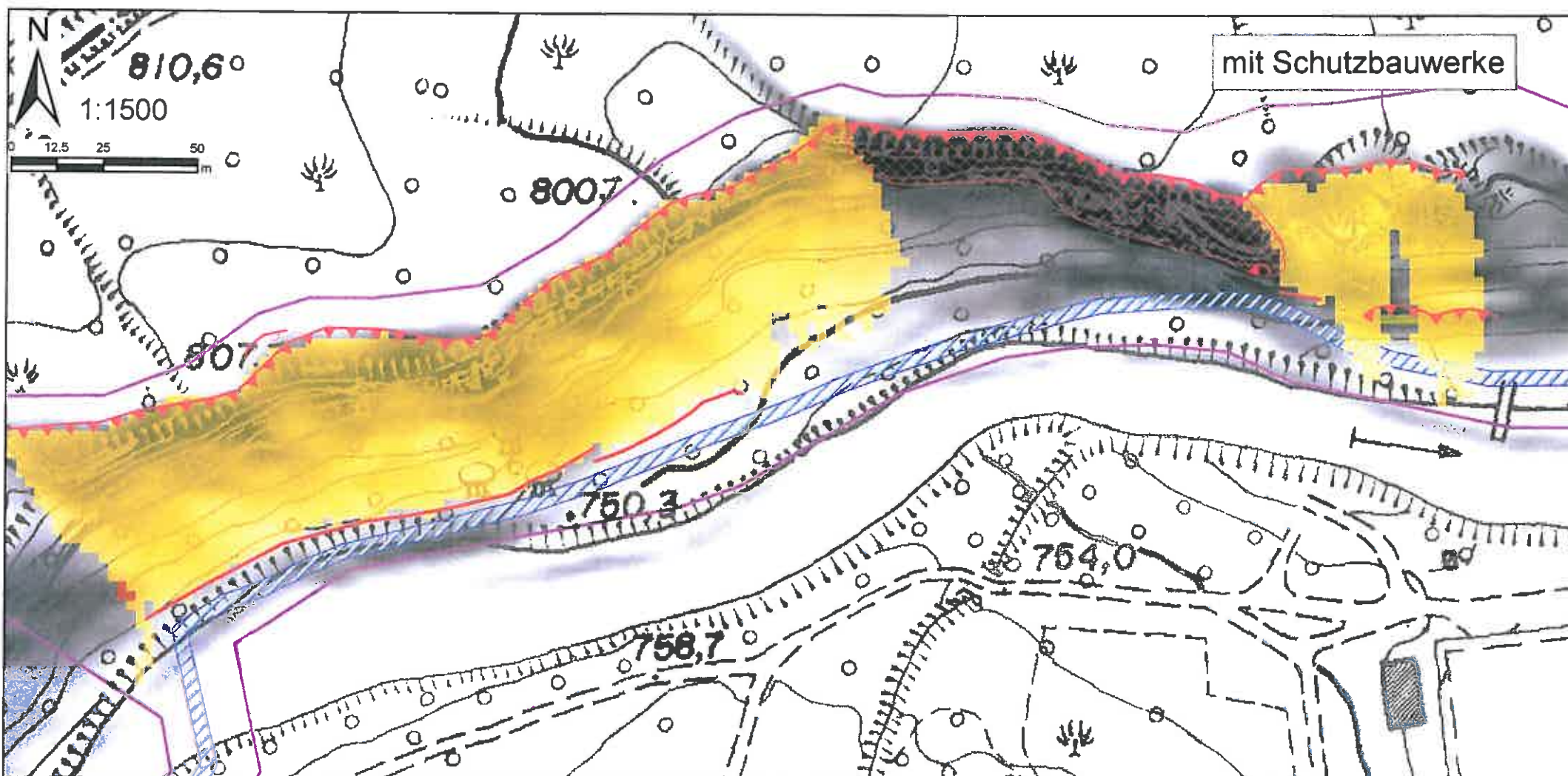
Sturzsimulation - Sprunghöhen simulazione crollo - altezze di rimbalzo



-  Projektgebiet
area di progetto
-  Radweg - geplant
pista ciclabile - in progetto
-  Anbruchkante Sturz - a.
nicchia di distacco - a.

max. Sprunghöhen Value

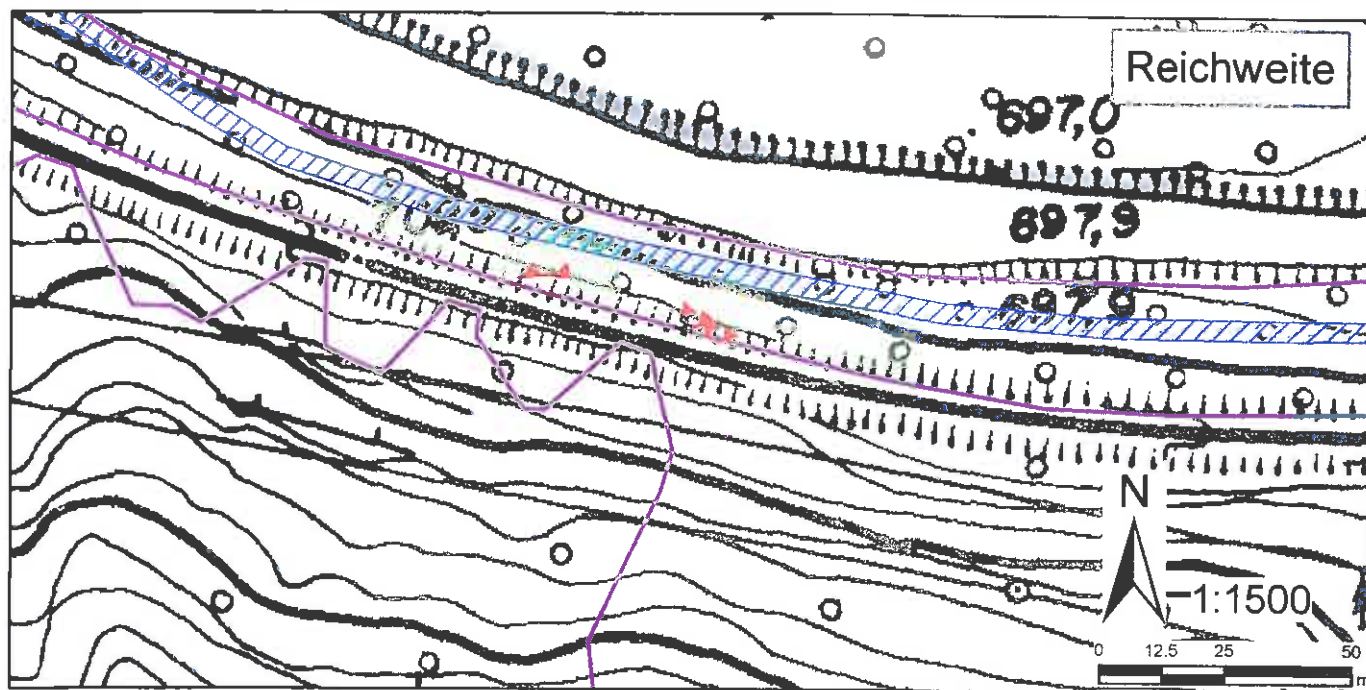
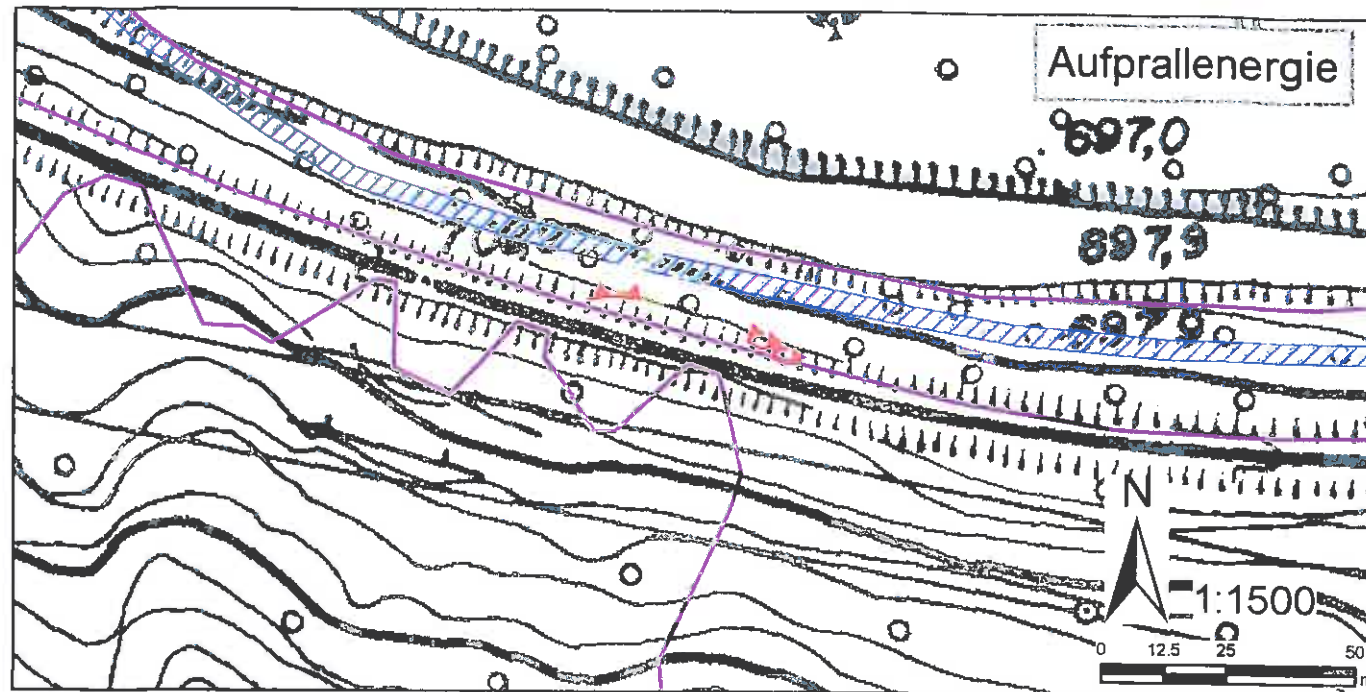
-  - High : 2.0574
-  - Low : 0



Schutzbauten, vorgeschlagen

-  Metalldrahtnetz
-  Erddamm H=1,5 m

Sturzsimulation - simulazione crollo ZONE B



- Projektgebiet
area di progetto
- Radweg - geplant
pista ciclabile - in progetto
- Anbruchkante Sturz - a.
nicchia di distacco - a.

max. Aufprallenergie

kJoule

- 0
- 0 - 30
- 30 - 101

max. Reichweite

Stillstand/Zelle

- High : 80
- Low : 0

